

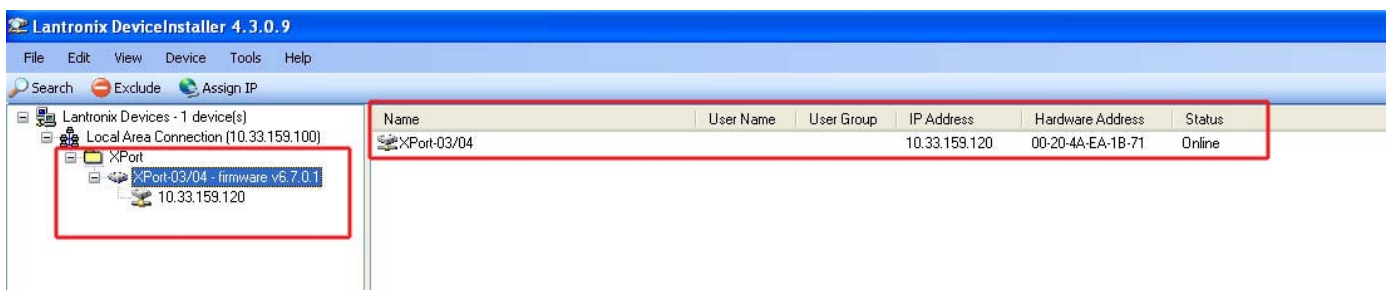
Lantronix Xport Guide – IC2001 / 4001 Controllers

J. Gleave

The scope of this guide is to explain how to configure a Sensor IC controller with a Lantronix Xport

After installing the Lantronix device installer start the software from the start menu.

The initial Lantronix screen will show a device tree in the left hand side of the window. Expanding this tree will show you and Lantronix devices attached to your LAN.



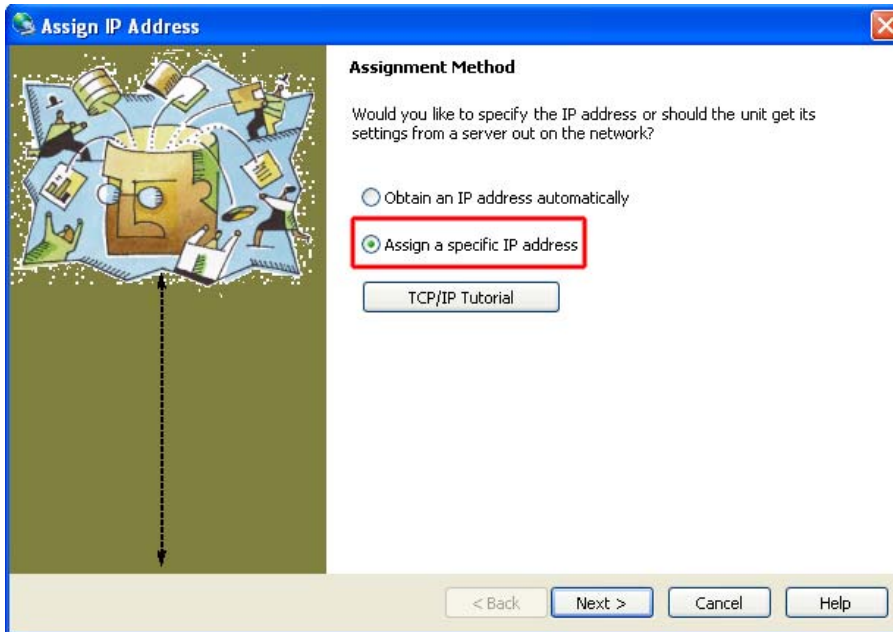
The first step is to give the Lantronix device an IP address that falls in line with the network/LAN than you plan to connect the device to.

You may need to obtain the IP address from the network administrator for the site.

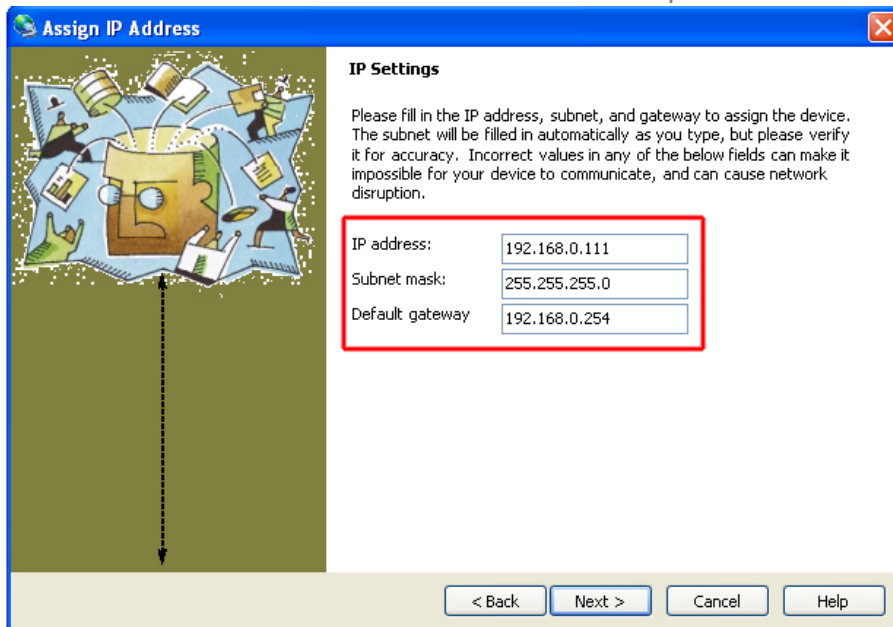
1. Highlight the Xport in the right hand pane of the device installer [you may see a MAC address or IP address] and then click **“Assign IP”** button, this will initiate the IP change wizard



2. Once the wizard has been initiated, follow the steps as the pictures point out below. The first step of the wizard is to decide whether you want the wizard to automatically assign an IP address for you or to assign a specific IP address, Choose **“Assign a specific IP address”** and then click **“Next”**



3. We now enter the relevant details into the 3 fields provided.



The 3 fields are:

IP Address [The physical IP address you want to assign to the controller/Xport]

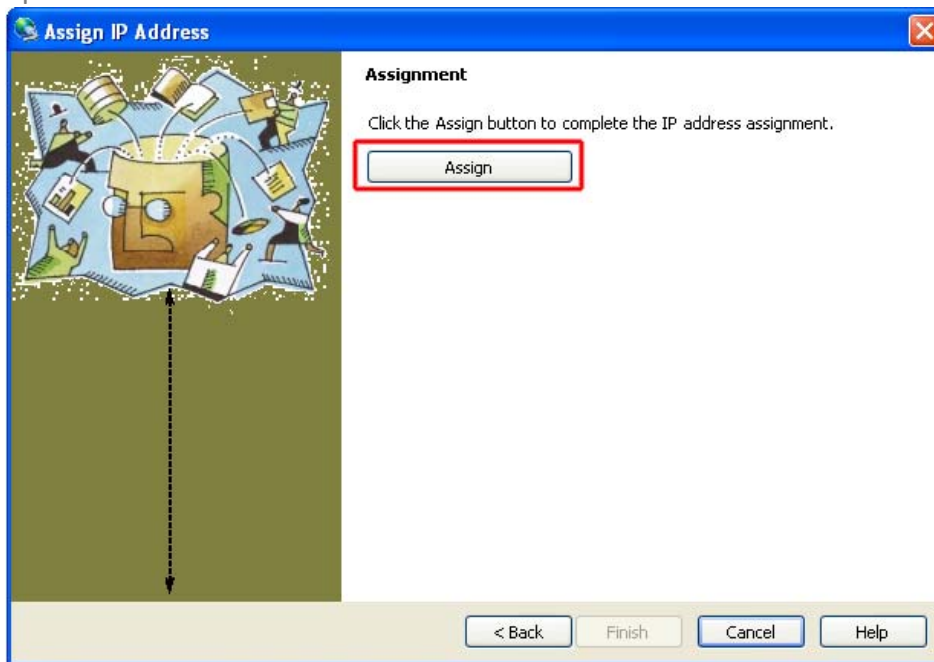
Subnet Mask [The Subnet the IP address of the controller/Xport belongs to]

Default Gateway [The gateway node the Controller will use to talk to another network, usually the IP address of a router or managed switch]

All these 3 addresses will be available from your network administrator

Once obtained fill in the 3 fields with the relevant information and then click next.

4. Click the **“Assign”** button. Device installer will now take the above 3 fields and assign them to the Xport

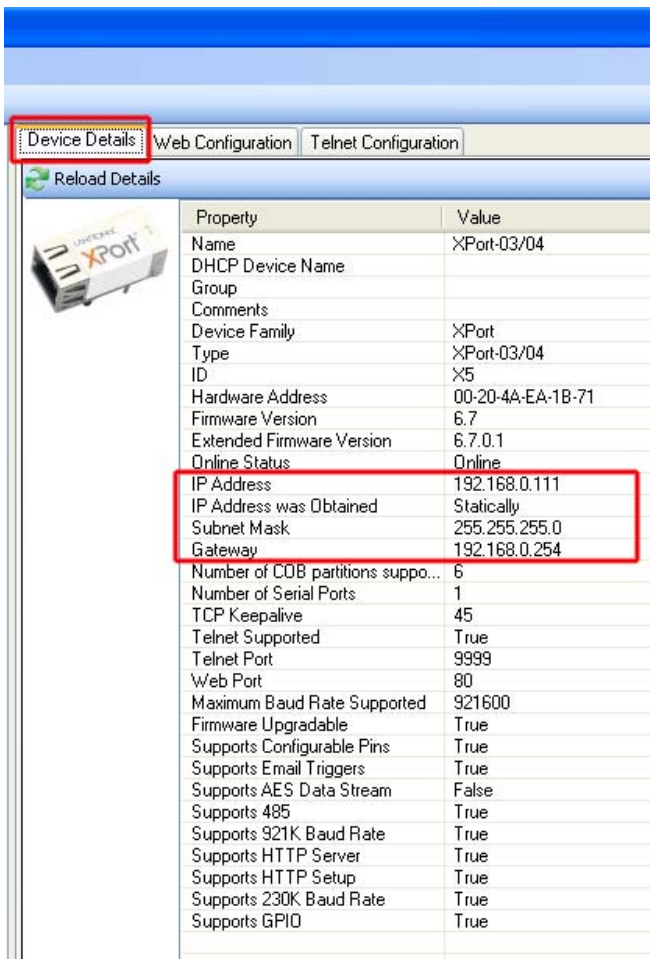


5. Once the progress bar is at 100% click **“Finish”**
The controller is now assigned with the designated IP address, Subnet and default gateway.

Part 2 – Changing controller/Xport defaults

Now that we have the controller setup with the correct IP address, Subnet and gateway we need to change certain elements of the Xport so that the controller can communicate with GuardPoint Pro.

To view the newly changed information we click on the “**Device Details**” tab in the right hand pain of the Device installer.



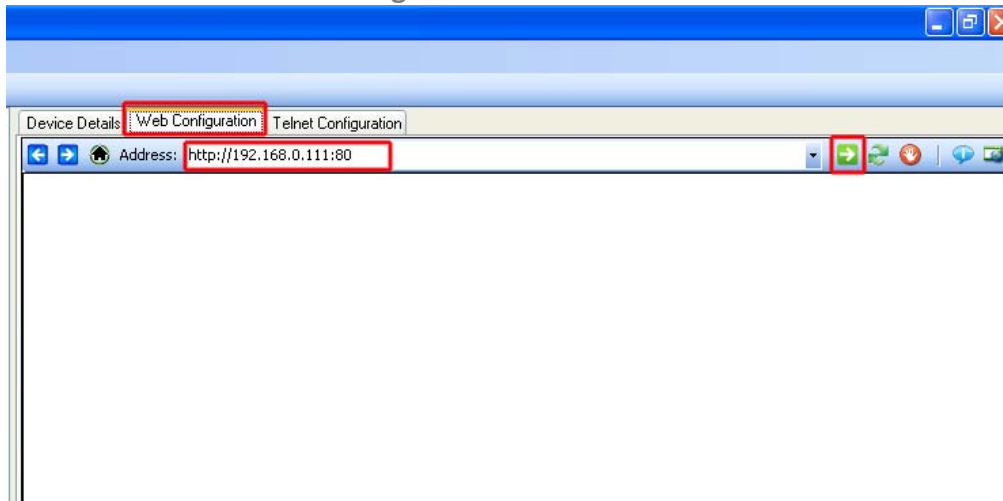
Property	Value
Name	XPort-03/04
DHCP Device Name	
Group	
Comments	
Device Family	XPort
Type	XPort-03/04
ID	X5
Hardware Address	00-20-4A-EA-1B-71
Firmware Version	6.7
Extended Firmware Version	6.7.0.1
Online Status	Online
IP Address	192.168.0.111
IP Address was Obtained	Statically
Subnet Mask	255.255.255.0
Gateway	192.168.0.254
Number of COB partitions suppo...	6
Number of Serial Ports	1
TCP Keepalive	45
Telnet Supported	True
Telnet Port	9999
Web Port	80
Maximum Baud Rate Supported	921600
Firmware Upgradable	True
Supports Configurable Pins	True
Supports Email Triggers	True
Supports AES Data Stream	False
Supports 485	True
Supports 921K Baud Rate	True
Supports HTTP Server	True
Supports HTTP Setup	True
Supports 230K Baud Rate	True
Supports GPIO	True

Here we can check all aspects of the Xport. However we still need to check and change the serial bus channel of the Xport. This can be done with either of the 2 methods provided from the Device installer. Web configuration or Telnet configuration.

First we will look at how to access the web configuration and what to change.

Web Configuration

First click onto the **Web Configuration** tab



You will be presented with a blank page.

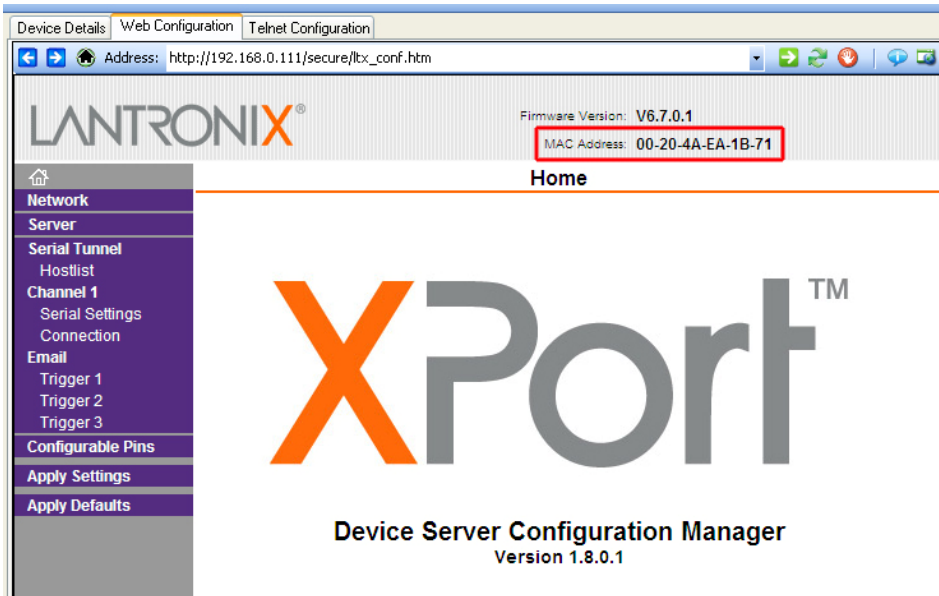
In the Address bar [much like a web browser] you will see the IP address of you controller followed by the port [in this case the Xport is set to allow web connections on port 80]

To access further settings of the Xport with the Web configuration method we need to click onto the Green arrow button. You will now see a username and password window, by default these are left blank



Click **“OK”** to access the front page of the Xport Web Configuration

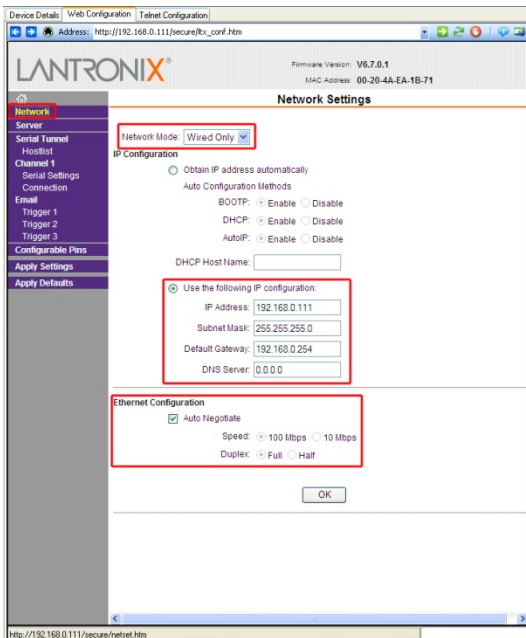
We can now see the front page of the web configuration with options down the left hand side of the page



Outlined in **RED** in the Web configuration picture above is the MAC address. This is the physical hardware address of the Xport, this address can also be found printed on the Xport.

We now need to run through the settings in the Left hand menu of the Xport Web configuration.

1. **Network** – Click onto the “**Network**” menu the following page will load



The Network Mode drop down needs to be set to Wired
Make sure that the **“Use the following IP configuration”** radio button is selected and the available fields correspond with what you entered earlier when setting up the IP address of the Xport.
[Ignoring the DNS server settings]

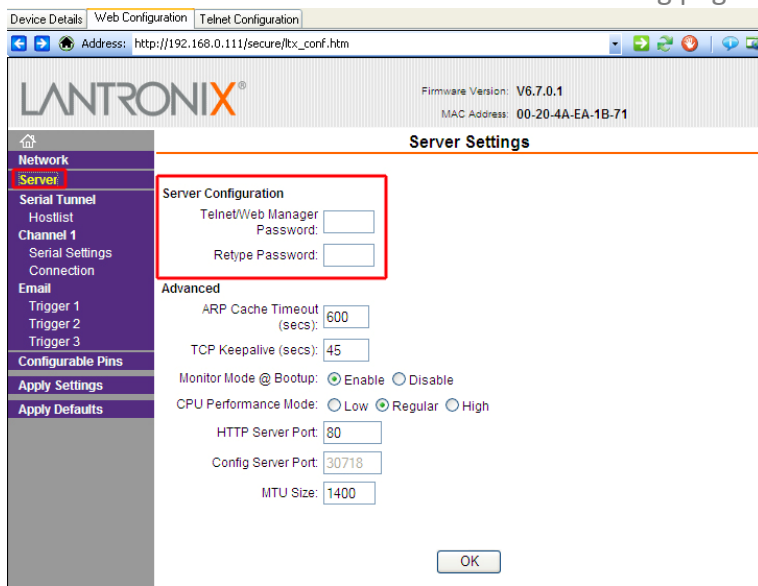
Ethernet configuration should be set to **“Auto Negotiation”**

Speed should be set to the speed of the network

Duplex should be set to **full**.

If for whatever reason you needed to change any settings on this page, once done click the OK button.

2. Server - Click onto the network menu the following page will load

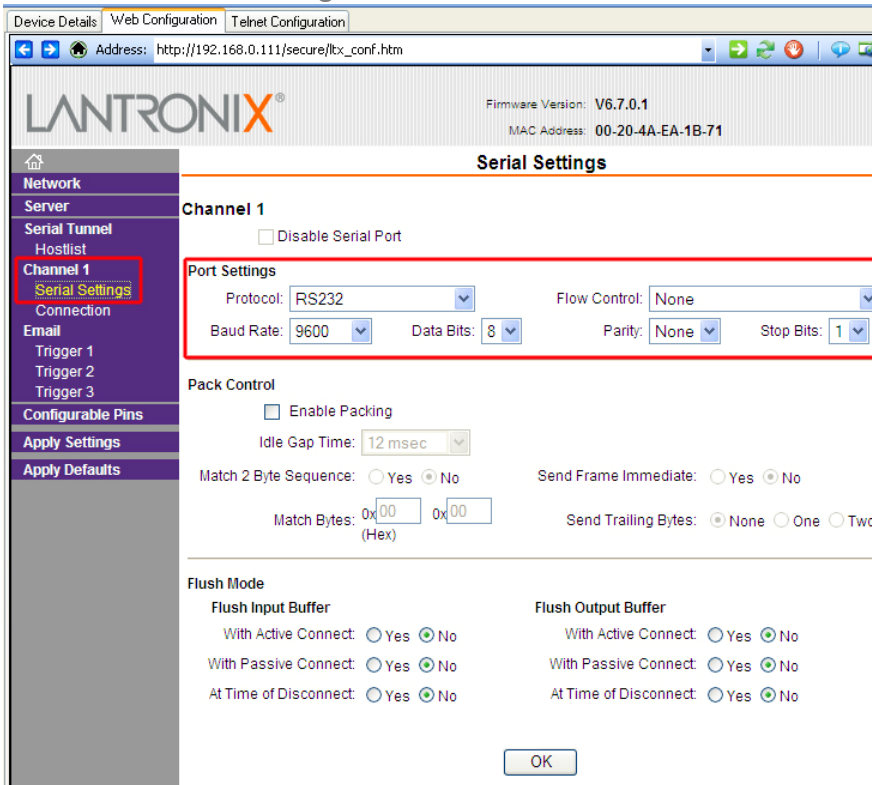


The screenshot shows a web browser window displaying the LANTRONIX Server Settings page. The browser address bar shows the URL: http://192.168.0.111/secure/lx_conf.htm. The page header includes the LANTRONIX logo, Firmware Version: V6.7.0.1, and MAC Address: 00-20-4A-EA-1B-71. The main content area is titled "Server Settings" and is divided into two sections: "Server Configuration" and "Advanced". The "Server Configuration" section is highlighted with a red box and contains the following fields: "Telnet/Web Manager Password:" and "Retype Password:". The "Advanced" section contains the following fields: "ARP Cache Timeout (secs): 600", "TCP Keepalive (secs): 45", "Monitor Mode @ Bootup: Enable (selected) / Disable", "CPU Performance Mode: Low / Regular (selected) / High", "HTTP Server Port: 80", "Config Server Port: 30718", and "MTU Size: 1400". An "OK" button is located at the bottom right of the page.

All of these settings can be left as default.

If you wish a password to be entered when configuring the Xport do so in the Server Configuration – Telnet/Web manger password fields [I would advise against this, if the password gets lost or another engineer visits the site and needs to configure the device, without this password they will be locked out]

3. Channel 1 – Serial Settings - Click onto the network menu the following page will load



The important settings to note on this page are the Port Settings. They should be configured like so.

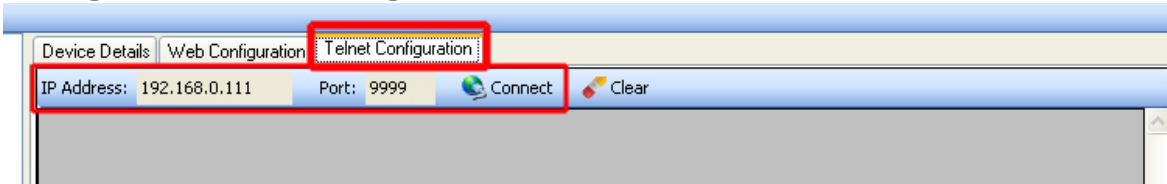
- Protocol – RS232**
- Flow Control – None**
- Baud Rate – 9600**
- Data Bits – 8**
- Parity – None**
- Stop Bits – 1**

Everything else on this page can be left as default. Once finished click **OK**.

That concludes the Web configuration method. You now need to click **“Apply Settings”** from the left hand menu for all changes to be written to the Xport. If for any reason you entered in the incorrect settings for the Xport underneath **“Apply Settings”** there is an **“Apply Defaults”** menu. This will reset the controller to the factory default settings

Telnet Configuration

Clicking onto the Telnet Configuration tab will load this screen



The important aspects to check here are:

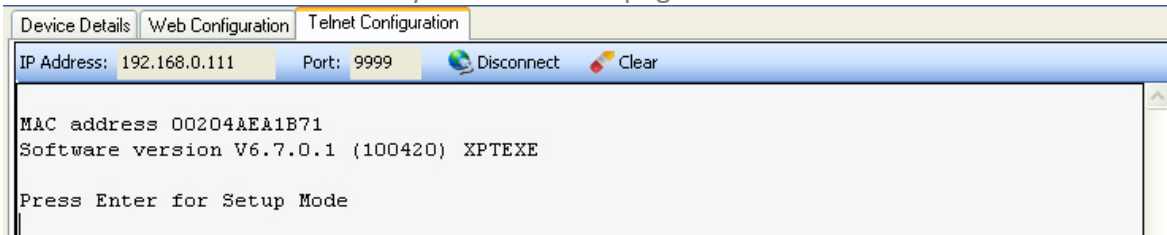
The IP address

Port Number

Both of these can be found on the “**Device Details**” Tab. The Telnet port number if not changed will always be at default **9999**.

Once these are found to be correct click “**Connect**”

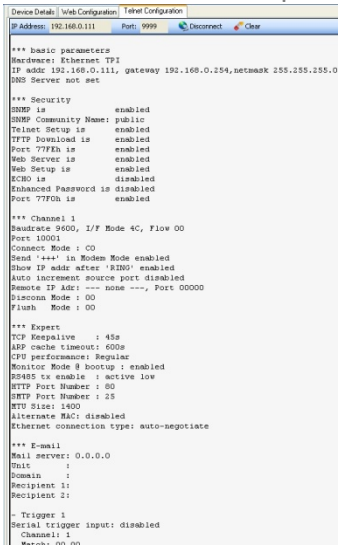
Once connect has been clicked you will see this page



You now have approximately 10 seconds to press enter for the Telnet Setup mode.

If you fail to respond within the timeout, you will need to click connect again.

Once enter has been pressed you will see the settings of the Xport in text form.



This is the same output as what you would see in the Web configuration but presented in a text format.

To the very bottom of this output you will see a menu

```
Change Setup:
 0 Server
 1 Channel 1
 3 E-mail
 5 Expert
 6 Security
 7 Defaults
 8 Exit without save
 9 Save and exit          Your choice ? |
```

To navigate through the various menus you enter the number off the corresponding heading as your choice and press enter.

All the headings in the Telnet configuration correspond to the same menus that are present in the web configuration. Refer to the web configuration section in this manual to see what needs to be changed.

In my example I will use **“Channel 1”** and scroll through the changeable variables, IP, Port Number ect.

```
Change Setup:
 0 Server
 1 Channel 1
 3 E-mail
 5 Expert
 6 Security
 7 Defaults
 8 Exit without save
 9 Save and exit          Your choice ? 1

Baudrate (9600) ?
I/F Mode (4C) ?
Flow (00) ?
Port No (10001) ?
ConnectMode (C0) ?
Send '+++' in Modem Mode (Y) ?
Show IP addr after 'RING' (Y) ?
Auto increment source port (N) ?
Remote IP Address : (000) .(000) .(000) .(000)
Remote Port (0) ?
DisConnMode (00) ?
FlushMode (00) ?
DisConnTime (00:00) ?:
SendChar 1 (00) ?
SendChar 2 (00) ?
```

First I enter my choice for Channel 1 and press enter.

I am now presented with

Baudrate (9600)?

At this point you can enter another Baudrate if I wish and then press enter. As I want to leave the Baudrate as 9600 I press enter and move to the next definable heading, which in this case is:

I/F Mode (4C)

Again as I want to leave this as it's currently set I would press enter and move on to the next heading.

Work through the headings referring to the Web configuration section and change what is outlined in that section.

Once you have come to the end of this menu you will see the main Telnet menu again.

```
Change Setup:
 0 Server
 1 Channel 1
 3 E-mail
 5 Expert
 6 Security
 7 Defaults
 8 Exit without save
 9 Save and exit          Your choice ? |
```

You now have 2 choices.

Exit without saving

Save and exit.

If you wish to save your changes enter **9** and press enter.

If you are not comfortable using the telnet configuration use the Web Configuration to make any changes

This concludes the Lantronix Xport setup